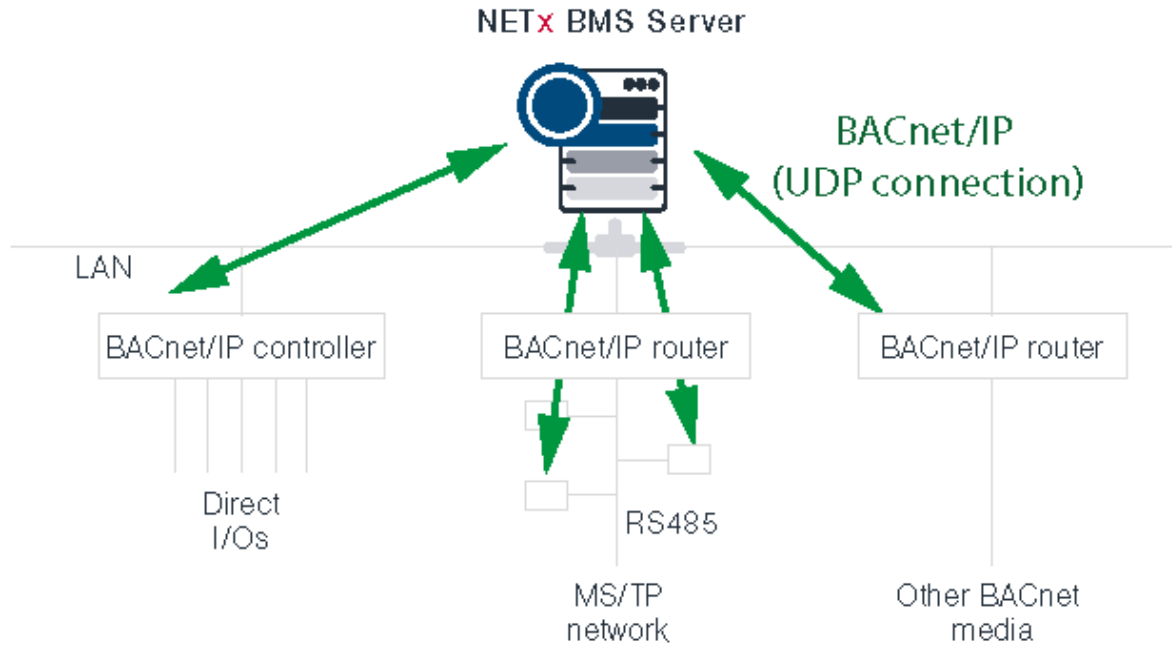


BACnet integration

The NETx BMS Core Server provides both BACnet client and server capabilities.

- BACnet client: integrates BACnet devices and objects in the Core Server
- BACnet server: acts as a BACnet device and provide any data point as BACnet object

The communication protocol is named *BACnet/IP*, which is based on UDP/IP unicast. Non-BACnet/IP devices that use other BACnet media (e.g. BACnet MS/TP, BACnet over LonWork, ...) can be integrated through respective BACnet/IP routers.



Network discovery

BACnet provides device management services that can be used to discover BACnet devices and their objects online. BACnet discovery requires a UDP/IP multicast connection to the BACnet network. If the BACnet device to be discovered is not on the local net and UDP multicast is filtered by inbetween network components (which is typically the case) then a *BACnet/IP broadcast management device* (BBMD) is required for discovery.