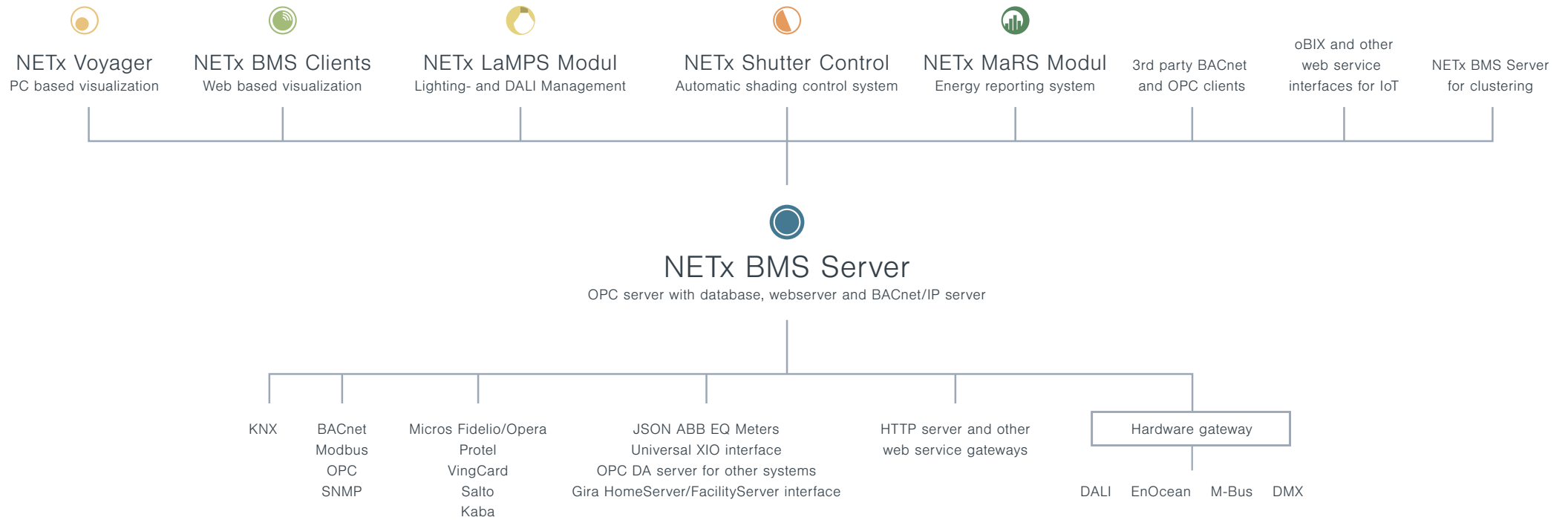




NETx BMS Server

NETx BMS Server



NETx BMS Server

- Support of different fieldbus technologies: KNX, BACnet, Modbus, SNMP
- Integrated web server for web-based visualizations (App for tablet or smart phone - iOS and Android)
- Database for storing historical data (historical data table/chart) and trending
- Module for smart metering
- XLogic editor and script engine for additional, complex control functionalities
- Interface to visualization clients: NETx Voyager, NETx BMS Clients
- Additional extensions and modules: NETx LaMPS, NETx MaRS Module, NETx Shutter Control
- Integration of third-party management applications using OPC or BACnet/IP interface or web services interface (oBIX,...)
- Integration of web services and IoT

Interfaces to field level

- **Integration** of different sub systems and technologies

KNX BACnet Modbus SNMP OPC

MICROS/Fidelio and Protel VingCard Kaba Salto

HTTP Server Web Service Gateways

DALI, EnOcean, DMX and M-Bus via hardware gateway

Additional project specific interfaces possible

- **Transparent data point view** independent of technology (“Server items”)

- **Exchanging and forwarding** of datapoint values between technologies

(“gateway functionality”)

Interfaces to management level

Management interfaces for integration of management clients

- **OPC interface**

Integration of third-party OPC DA 2.0 and OPC UA clients

- **BACnet/IP interface**

- NETx BMS Server acts as BACnet device
- All server items can be mapped to BACnet Objects

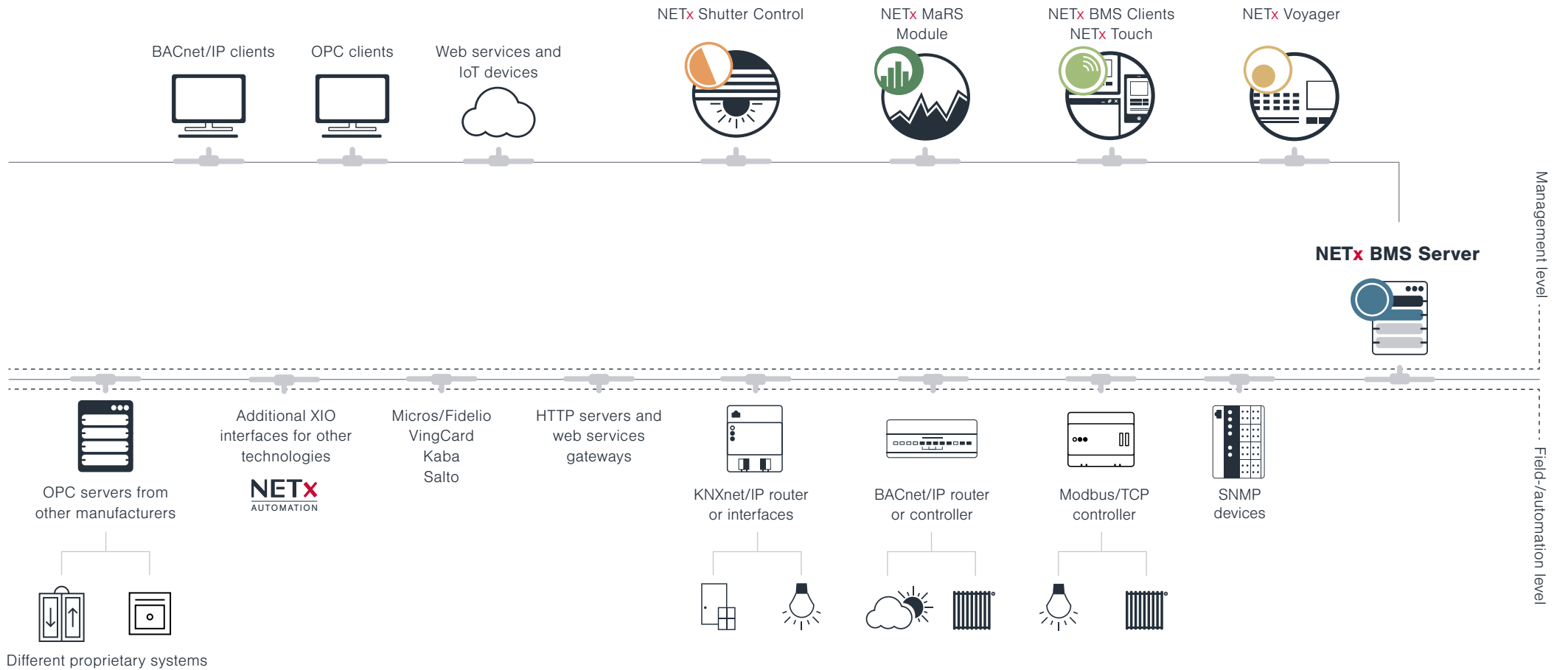
- **VNET**

TCP/IP based interface for integration of NETx clients

- **oBIX and other Web services**

Web service interface for fast and easy integration of foreign clients

Interfaces



Project import

Easy import of KNX projects from ETS5 via NETx BMS App Secure

App recognizes configured IP addresses of KNXnet/IP routers or interfaces. Automatic assignment of KNX group addresses to KNXnet/IP routers or interfaces based on building topology.

Extended export file contains:

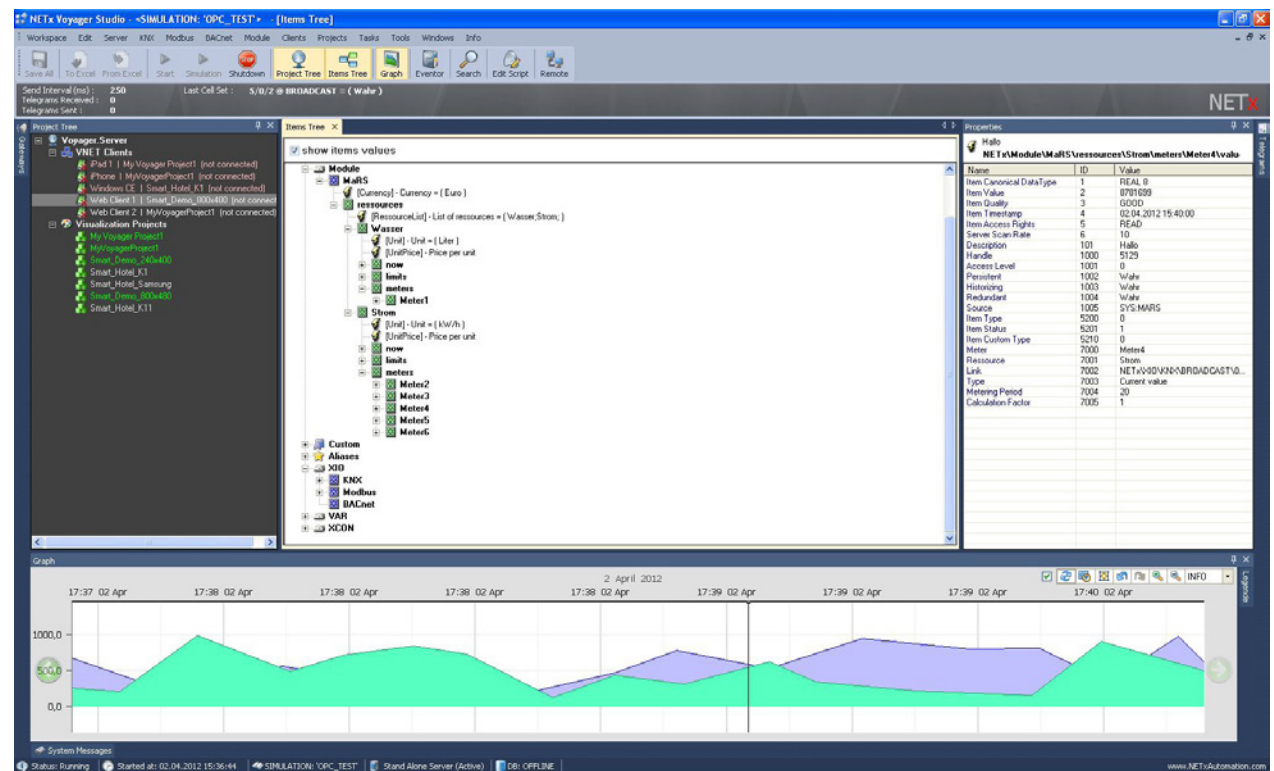
- KNX group addresses and KNX data point types (KNX DPTs)
- KNXnet/IP routers and interfaces
- Security information for Secure KNXnet/IP routers and interfaces
- ETS project structure incl. network topology (areas, lines, devices, communication objects)
- Building and trade view
- Export of configuration of KNX/DALI gateways for NETx LaMPS Module

BACnet Explorer for automatic devices and object discovery without external tools

NETx BMS Studio

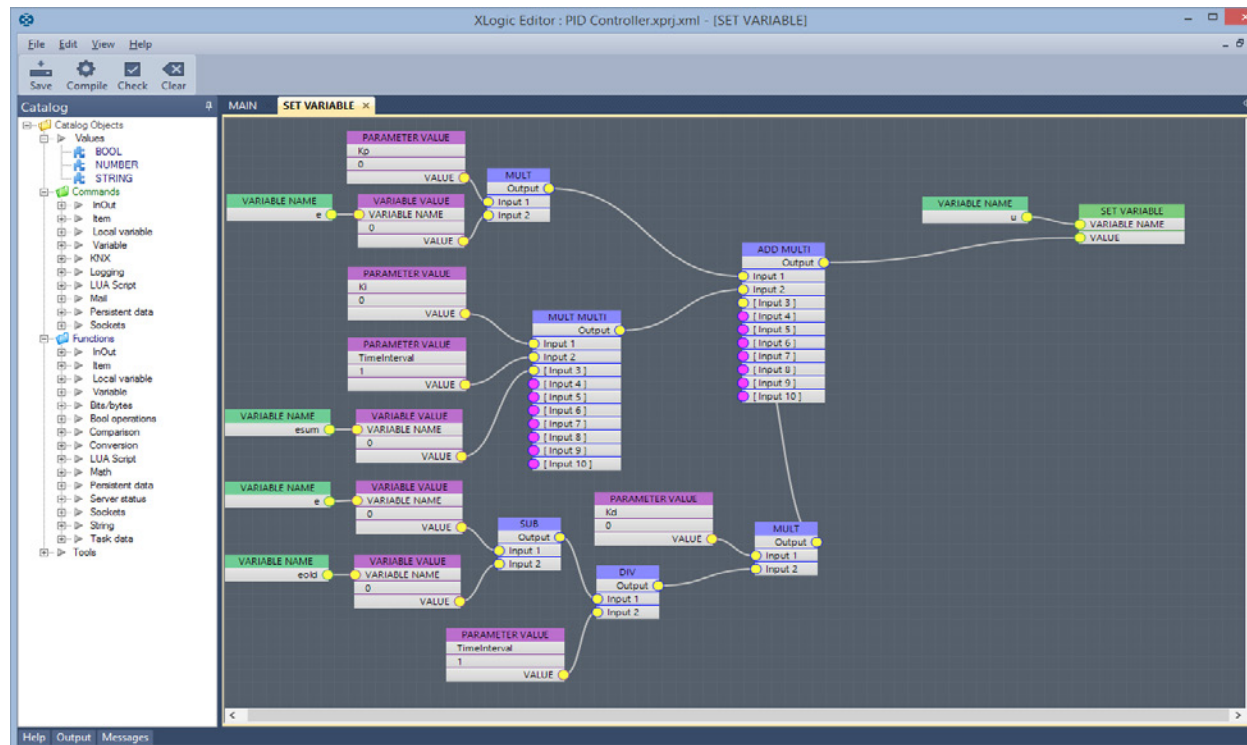
Management user interface for configuration and maintenance

- Management of workspaces
- Configuration of data points
- Automatic import tools
- Logging
- Development of LUA scripts
- Change of parameters
- Creation of server-side events, tasks and links
- Management for web based visualizations



XLogic Editor

Graphical editor for implementing control functionality



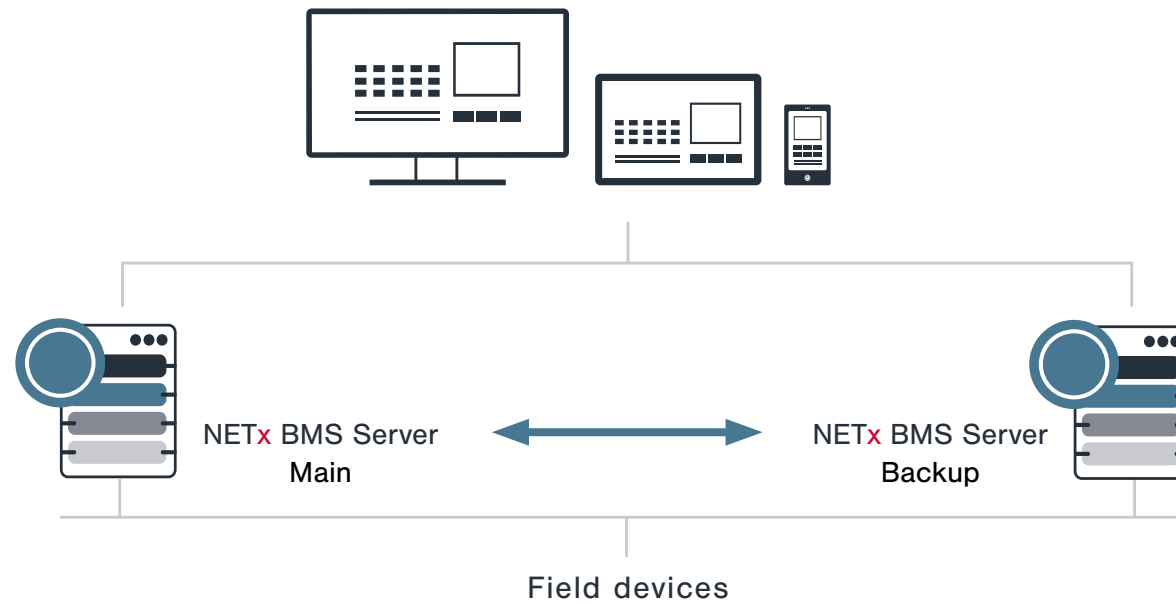
Web based visualizations

Included web server for visualizations

- Support of all common Web browsers
- Based on JavaScript and HTML 5 - no plug-ins necessary
- Editor for creating and modifying visualization projects included within NETx BMS Server
- NETx Touch: special app for iOS and Android devices

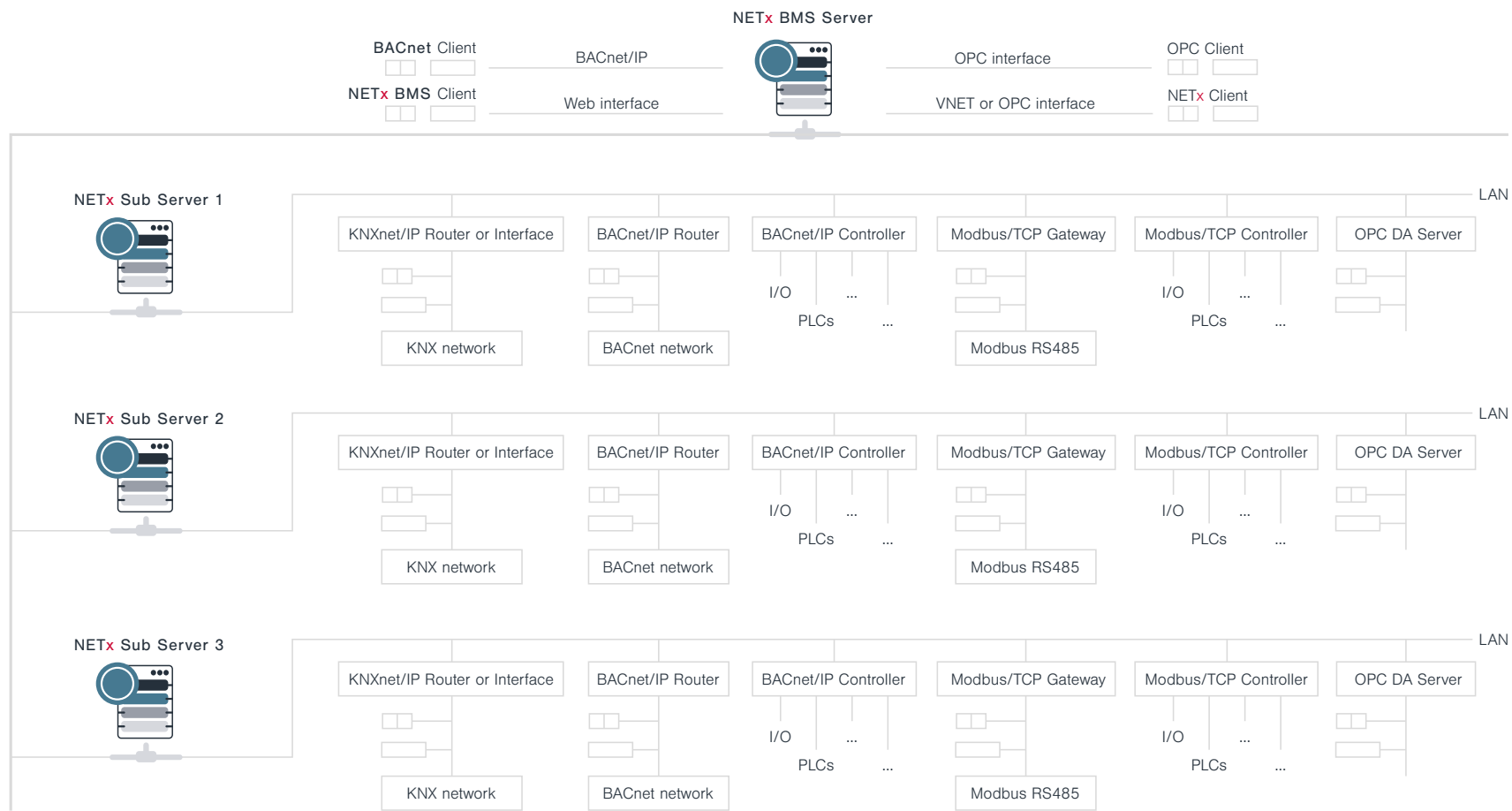
NETx BMS Server

Main/backup solution



NETx BMS Server

Clustering



www.netxautomation.com